

1.1 SUPPLIER

FR. FASSMER & CO
Industriestrasse 2
D-27804 Berne / Motzen
GERMANY

Phone: +49 4406 9420
Fax: +49 4406 942 100
e-mail: info@fassmer.de



1.2 EQUIPMENT

1 set Gravity Pivot Davit & Winch system FPD 80 c/w Winch type W20L, Starb.-Side

1.3 DIMENSIONS/WEIGHT/PERFORMANCE

DAVID STRUCTURE C/W ALL ASSEMBLED

7,6 m x 7,8 m x 2,9 m.

Weight approx. 6100 kg.

Davit & Fully Laden Boat = 6100 + 8380kg = 14480 kg.

DAVIT & WINCH PERFORMANCE FEATURES

Davit Safe Working Load = 42,5 KN. per arm.

Hanging Off Safe Working Load = 24 KN per arm

Max. number of persons on boat by using Hanging Off for maintenance: 6 Persons

Total S.W.L. on Winch Drum(s) = 72,5 KNKN (SB)

Winch Hoisting Speed = 5,0 m/min (SB)

Gravity Lowering Speed = min. m/min.

Max. Lowering Height @ 20° Inboard List = 10 m(SB)

The hoist winch is supplied dry and the initial fill up to oil level plug is approx. litres.

1.4 BOAT DATA

Boat type: SEL-R 8.5/7000

Weight compete (empty,max.): 5005 kg

Number of Persons for lowering: 45

Number of Persons for hoisting: Life Boat = 20

1.5 UTILITIES

Winch Hoist Motor – 400V/50Hz; 3Ph 220V560Hz 3ph

Control Circuit – 220V



1.6 ENVIRONMENT

The davit and winch assemblies are designed to work in an offshore/marine environment when fully protected by a suitable coating system. The davit structure is manufactured of mild steel to EN 10025 S275JR/ S 355 J2 G3 and suitable for ambient temperatures in stowage range -30°C to +65°C.

The electrical equipment supplied with the davit/winch is [IP54/56](#).

1.7 PAINTING SPECIFICATION

Paint Maker:

Surface preparation:

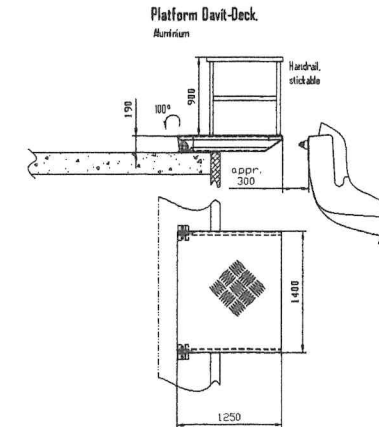
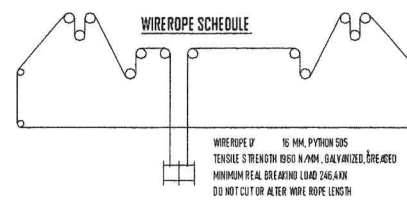
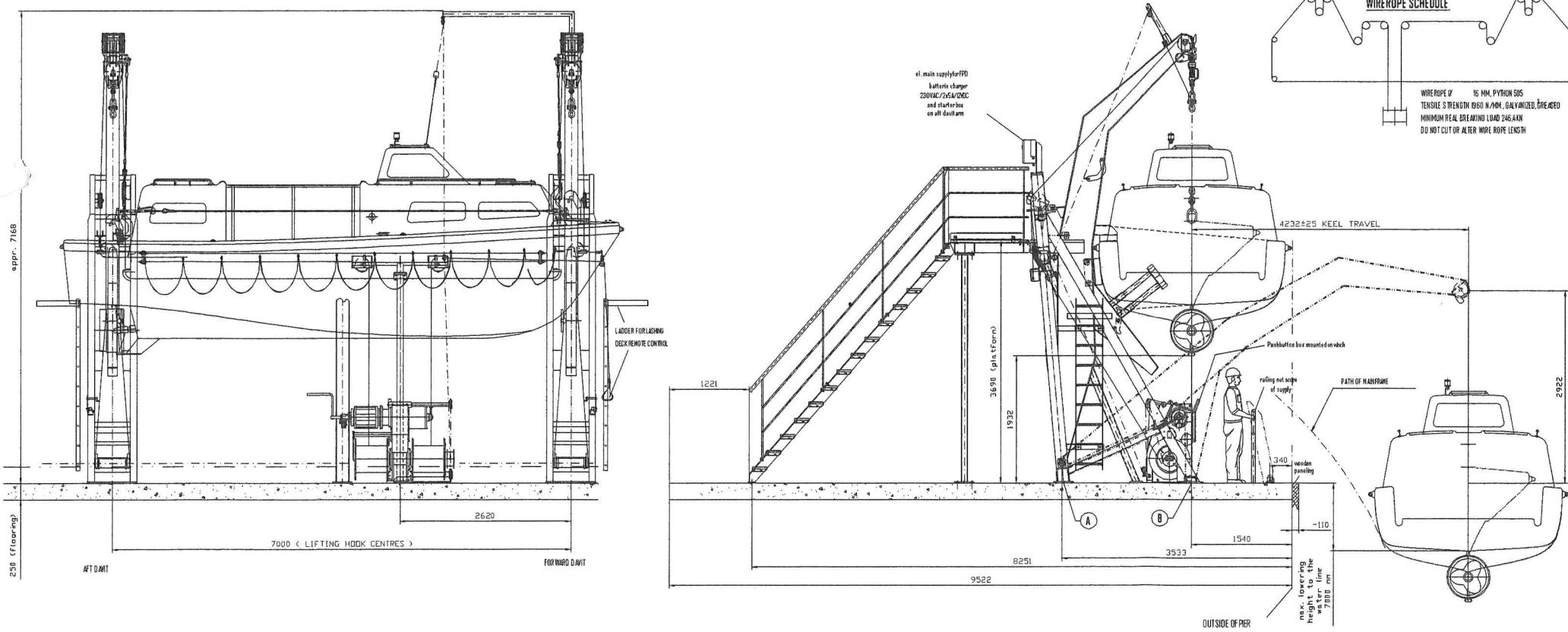
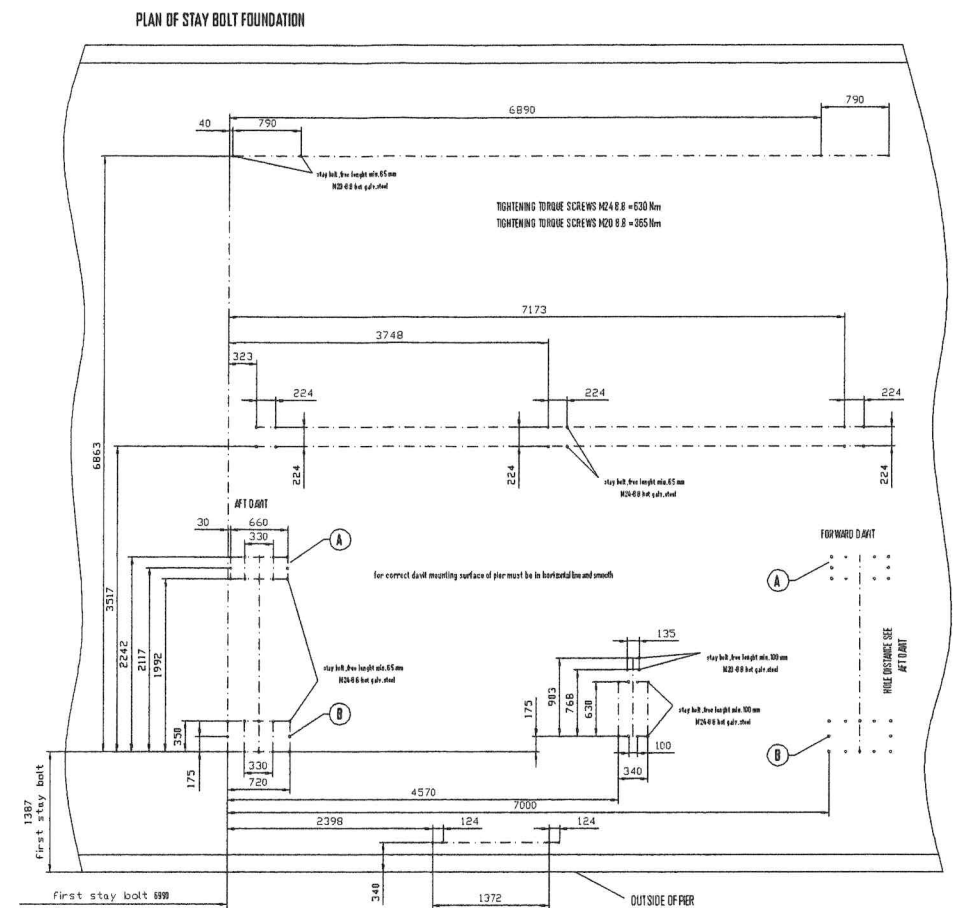
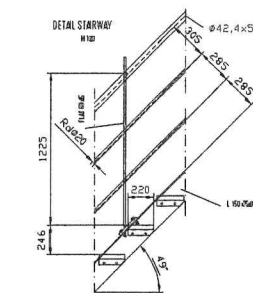
Primarily surface preparation: SIS Sa. 2.5 grade

Secondary surface preparation: [non](#)

Outside	Coat	Painting scheme and colour	DFT (μ)
	1 st coat	Intergard 400	125
	2 nd coat	Intergard 263	125
	3 rd coat	Interthane 990 White	50
	4 rd coat	non	

Electric equipment in enclosed space: non

Electric equipment at exposed area: Stainl. Steel, Brass

[illegible]DAVID FORCE

Q static load: deadweight and live load
(stairs and pods) + load with 46 persons

the existing population were properly to shift to more fully exploiting the new energy in power or system design. It is not a very realistic world where such results may be projected as a pure projection of a rising

to the leading states as well as to the rest of the world. It is not a very realistic world where such results may be projected as a pure projection of a rising

STANDARD SIZE AS SHOWN			
MAY BE ALTERED VERTICAL (A) (PITCH) OR HORIZONTAL (SLOPE) OR BOTH			
B	modification stair inclination	29.11.04	Graf
A	modification after strulo meeting	15.11.04	Graf
B	Admission	04	Graf

General arrangement of gravity pivot ends			
DIN ISO 2768-m		FPO DO 58.1465/2000	
Size	1/5	Order No.	00.90.49-080.00.00.8
Year	2004	Year	
Size	25.0	Size	1/5

F. FASSNER GmbH & Co. KG	
Industrie-Str. 2	
D - 27804 Breme / Mitzian	
